

NATURE AT RENAISSANCE

1.

PROVIDING HABITATS

We provide many habitats on the golf course. Bird boxes and bat boxes can be seen scattered in the trees, providing shelter to these species. Further, deadwood in our woodlands can provide bugs and insects with an ideal habitat to exist and thrive.

2.

PROTECTED SPECIES

At TRC, we provide shelter to many protected species. Some include: Badger, Bats, Wild Birds, Deer, Hare, and Common Frog and Toad. Many find shelter in gorse, offline rough, in the dune land and in the trees. Wildlife Surveys can inform the installation of better protection measures.

3.

DUNE LAND

TRC is in consultation with NatureScot and Scottish Forestry with a dune restoration programme, targeting the dune land that lies between TRC and the Firth of Forth. This will see the removal of invasive seabuckthorn and trees that are not natural to the landscape. To compensate, 12,000 trees are to be planted in Loch Ardinging Nature Reserve, Stirlingshire.

4.

BIODIVERSITY

We have many different vegetation types that support an array of species here at TRC. Between plants and animals, we have a truly diverse landscape. We aim to ensure that our maintenance of the course continues to support these species, long-term.

5.

NATURALISATION

The greenstaff regularly identify opportunities for naturalisation on the golf course. GPS tracking, visual assessments of wear patterns, and monitoring patterns of play help to identify underutilised areas of turfgrass and underutilised bunkers, to minimise our input into the course.

6.

WILDFLOWER MEADOWS

Wildflower meadows are important sources of nutrition for insects such as honeybees and butterflies. They provide habitats, provide pollen for pollinating species, are visually pleasing and can store carbon faster than grass, so are beneficial to the atmosphere. We have a small patch we are currently monitoring, and hope to plant more soon.

We are consistently striving to look after our natural landscape here at Renaissance Club.



WILDLIFE AT RENAISSANCE



BUTTERFLY

Butterflies can be spotted around different woodland areas on the course throughout the summer months, particularly in the trees by hole 17.

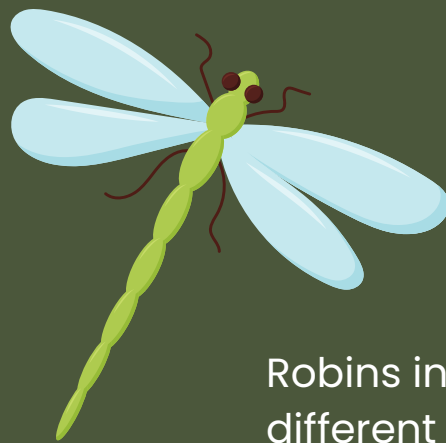
HEDGEHOG

Hedgehogs are becoming an increasingly rare species. They love to use our offline rough and grasslands as protective habitat.



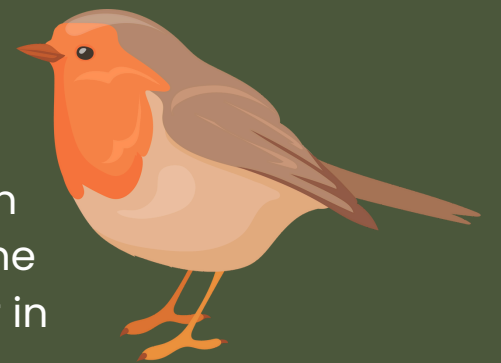
DRAGONFLY

Dragonflies are vital to a healthy ecosystem, acting as ideal food sources to birds and amphibians. They are also good predators – one single dragonfly can eat hundreds of mosquitoes every day! This reduces pest populations and benefits the outdoors.



ROBIN

Robins inhabit a variety of different locations across the estate. They can be spotted in various woodlands such as the trees behind the 15th green, or in the dune complex along the coastline.



MISTLE THRUSH

This bird species is on the UK Bird of Conservation Concern Red List. These small birds have a distinctive sound, often heard from the tops of the trees surrounding the Fanzone – listen out!



ENGLISH BLUEBELL

A little more than a flower... Bluebells exist in many folklore tales and are believed to have some fairy magic! Their striking colours can be easily spotted to the right of 4 and behind 15.

POPPY

Poppies are often noticed by their vibrant colour. They are an ecologically important plant species and we are lucky enough to have them grow sporadically on site!



STOAT

Often seen utilising space in the wildlife hotspot between 8 and 11, this species is protected in Scotland due to population decline in the past.

