

DRIED BLOOD SPOT TESTING

Dried Blood Spot (DBS) testing involves taking a few drops of blood from tiny capillary blood vessels in a Player's upper arm (or fingertip). A small device pricks the skin and absorbs droplets of blood from the capillaries. Collection takes place under supervision of a qualified Doping Control Officer. Like urine and venous blood tests, the DBS samples are sent securely to a World Anti-Doping Agency (WADA) accredited laboratory to analyse for Prohibited Substances or Methods.

Benefits of DBS testing:

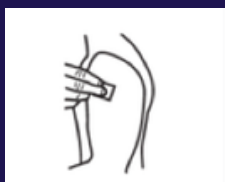
- Quick sample collection process, using arm chosen by Player
- Player friendly, minimally invasive compared to urine collection
- Less blood required than venous blood collection offering a more comfortable Player experience
- DBS takes a small amount of blood (a few drops) from skin blood capillaries
- Minimal facilities required (clean, quiet location, desk, chair and clinical waste disposal)

The following steps are involved in collecting a DBS sample from a Player:

1. The Player selects a sealed DBS device kit.



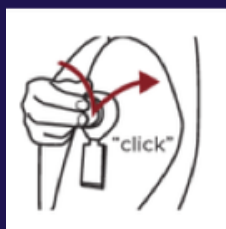
2. Player selects preferred arm, Doping Control Officer (DCO) asks Player to expose the upper arm, warm the area, then clean the skin/test site with an alcohol wipe and wait for it to dry.



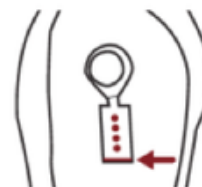
3. The DCO/Player opens the kit, then places the DBS device firmly on the Player's skin, cartridge side down. The vacuum/adhesive backing attaches the device to the arm.



4. Holding the device in place, the DCO or Player removes the cover and firmly presses the red button to activate the microneedles. These prick the skin (Player may feel a small scratch). The device remains on the arm as the blood is collected.



5. A tiny amount of blood is drawn into the device and down onto the four dots of absorbent material in the device. It can take three to five minutes for all dots to turn red



6. Once collection is complete, the DCO removes the device from the Player's arm. If there is any additional bleeding from the collection site, a gauze wipe or plaster may be used.



7. Any slight soreness at first, compares to a small pin prick. The device is sealed and uniquely numbered for transportation to the laboratory. Player completes, signs and receives a copy of the Doping Control Form



8. Risk of infection is minimal. The DCO uses sterilised equipment to collect the sample. If all four pods are not filled on first attempt, a new DBS kit is selected and the procedure repeated on a new collection site.



Dried Blood Sport (DBS) Testing Procedure

Selection of Sample Collection Kit

- Choose an individually sealed collection kit containing the Tasso collection device, alcohol swab, and adhesive dressing.
- Open the selected kit and verify all materials in the kit are sealed and not tampered with. Keep the collection kit under your full view until your sample is collected and sealed.

Providing the Sample

- Choose your preferred arm for the collection. Expose the upper arm, rub the skin gently to warm it. The DCO will clean the collection site with an antiseptic wipe. Wait for it to dry.
- DCO/Player opens the device pouch and removes the tab behind the red button to expose the adhesive. DCO/Player applies the device firmly to the upper arm with the sample cartridge pointing downwards.
- Once adhered to the arm, the DCO/Player removes the white cover and presses the red button firmly until a click is heard. You may feel a small scratch at this point.
- The device should remain on the arm for 3-5 minutes until
 - the sample cartridge is full, when four (4) pods are filled and four dots appear
 - the DCO sets a timer for 3 & 5 minutes to check on progress.
- While waiting for the sample device to fill, check the seal numbers to be recorded and affixed to the device and kit.
- If all four pods are not filled on first attempt, a new DBS kit is selected and the procedure repeated on a new collection site.

Sealing the Sample

- Once collection is complete, the device is slowly peeled from the arm. (If needed any additional blood can be wiped and covered with a plaster.) Seals are attached to the device and the clear film is removed from the cartridge to expose the pod vents.
- The device is placed in the silver foil specimen bag, sealed and placed in the collection kit box and sealed.
- Check all numbers are correct and recorded on your Doping Control Form.

Laboratory Analysis & Results Management

- Sealed samples are transported securely to the laboratory for analysis. Results (by code numbers) are reported to the Tour's Anti-Doping Adviser, who will notify you.
- An adverse finding will be investigated to determine whether an approved Therapeutic Use Exemption (TUE) may explain the finding. Detailed results management procedures are set out in the Tour's Anti-Doping Policy.